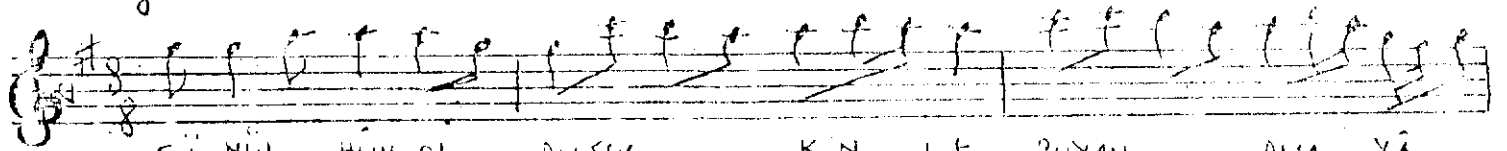


TAHİR İLÂHİ

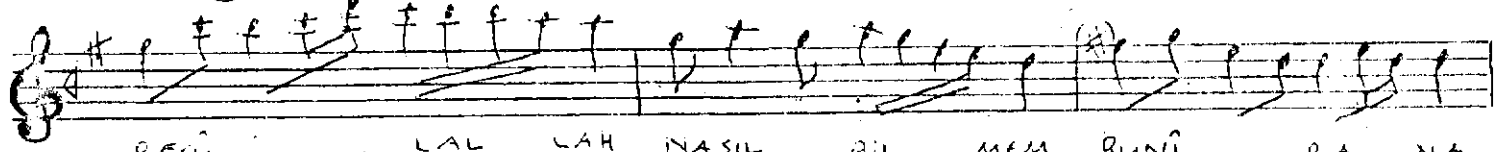
MOZEH : Celal ABACI
GÖKTEPE YAMAN DEDE

Düze

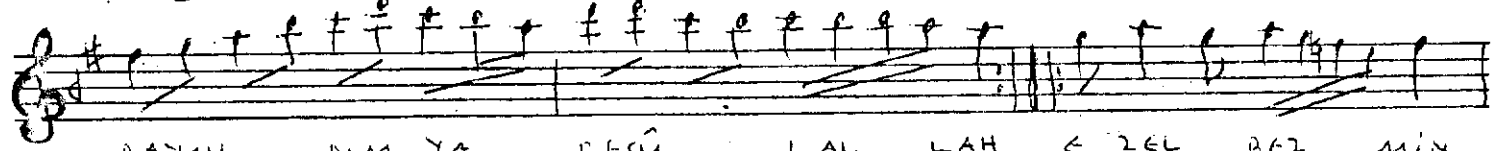
Gönlü hân oldu şevkinder..



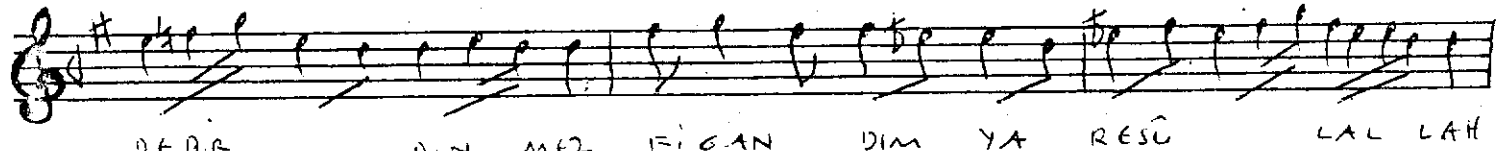
GÜ NÜL HÜN OL DUSEV K N LE DUYAN DIM YÂ
GÜL AĞ MAZ SAĞ LAYAN AK MAZ I LA Hİ NÜ



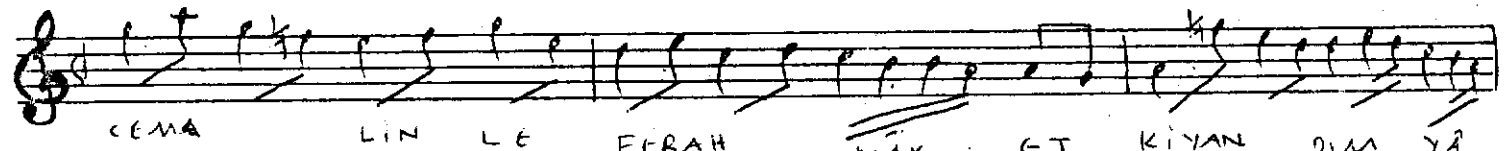
RESÜ LAL LAH NASIL BİL MEM BUNİ RA NA
RÜNOL MAZ SA SÜ NER A LEM NEFES KAL MAZ



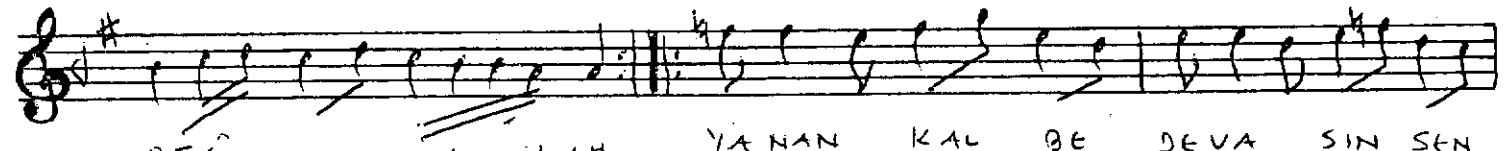
DAYAN DIM YA RESÜ LAL LAH E ZEL BEZ MİN
FELEK MAN ZÜ RÜNOL MAZ SA Fİ RAK AĞ LAR



DEDE DİN MEZ FİGAN DİM YA RESÜ LAL LAH
VİSAL AĞ LAR E ZEL MES TÖ RÜNOL MAZ SA



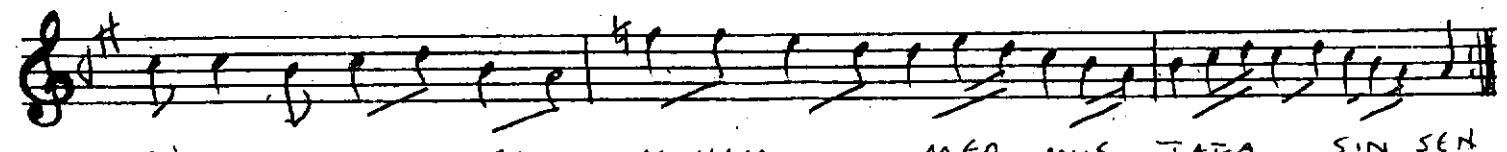
CENA LİN LE FERAH NAK ET KİYAN DİM YA



RESÜ LAL LAH YANAN KAL BE DEVA SİN SEN



BULUN MAZ DİR ŞİFA SİN SEN HABİ Bİ KİB



Rİ YA SİN SEN MUHAM MED MUS TADA SİN SEN